



# KODIAK

T R A V E L   T R A I L E R S

KODIAK





**OPTIONAL TV**

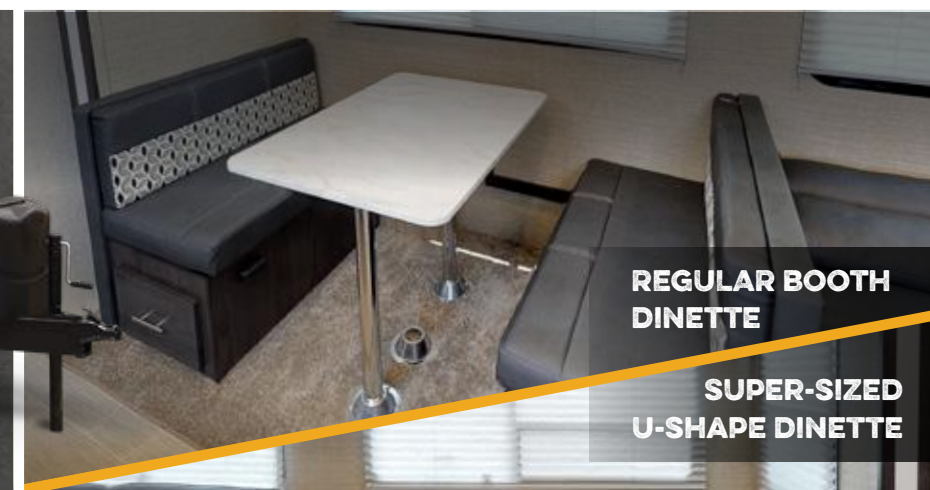
**FIREPLACE  
IN SELECT  
FLOORPLANS**



**MORRYDE STEP ABOVE  
ENTRY STEPS**

These sturdy aluminum entry steps with adjustable legs make it easier and safer to enter and exit your Kodiak RV.

\*Available on units manufactured after 8/2/2018



**REGULAR BOOTH  
DINETTE**

**SUPER-SIZED  
U-SHAPE DINETTE**



**CONVERTIBLE DINETTE**

**Kodiak Exclusive Feature**

With the option to set up as straight or U-shaped, the Kodiak's industry-leading convertible dinette comfortably sits a group of adults as well as a family. At night, arrange the cushions into a bed to accommodate extra sleeping campers. (Select models)

# KODIAK

As the leader in ultra light technology, Kodiak offers an innovative, aerodynamic RV for easier towing and better fuel economy. But just because you can tow a Kodiak with an SUV, crossover, minivan or light truck, doesn't mean you'll be lacking amenities. Every Kodiak we build is packed full of modern interiors, lightweight aluminum construction and features to improve your camping experience.



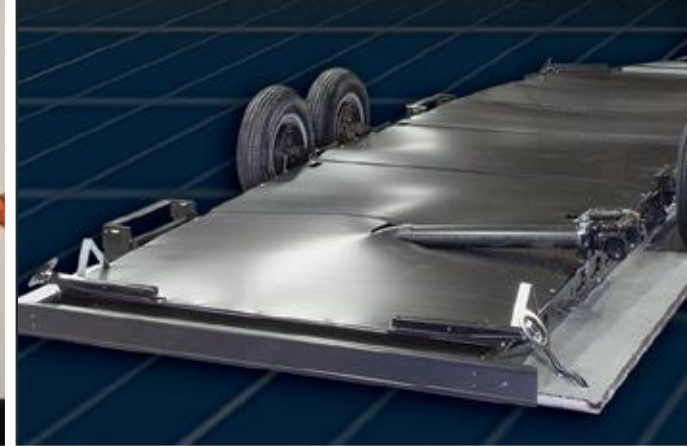
### RESIDENTIAL SIZE 60 X 80 QUEEN BED

The bedroom features wardrobe storage with an overhead cabinet and reading lights, while delivering travelers with a 60x80 Residential Queen Mattress.



### BEAR CAVE PASS THRU STORAGE BAY

Maximizes the Kodiak's storage area and makes it 40% larger than the competition. More space means even more room to bring it all!



### HEATED AND ENCLOSED UNDERBELLY

Prevents water tanks from freezing, and protects the tanks and floor from road damage to extend your camping season.



OPTIONAL TV

KD ULTRA-LITE 261RBSL WITH BROWNSTONE DECOR



### LED POWER AWNING

Our LED power awning provides maximum lighting during camping stays.

### IN-COMMAND

Control virtually anything with a motor or a switch with the iN-Command technology, using your smart phone, tablet, or the control commander mounted on the wall.



(Ultimate units only)

# ULTRA-LITE



KODIAK ULTRA-LITE 285BHSL



KODIAK ULTRA-LITE 201QB



KODIAK ULTRA-LITE 255BHSL



KODIAK ULTRA-LITE 287RKS



KODIAK ULTRA-LITE 227BH



KODIAK ULTRA-LITE 261RBSL



KODIAK ULTRA-LITE 293RSL



KODIAK ULTRA-LITE 248BHSL



KODIAK ULTRA-LITE 283BHSL



KODIAK ULTRA-LITE 299BHSL

# ULTIMATE



KODIAK ULTRA-LITE 331BHSL



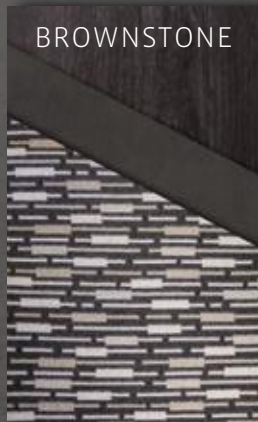
KODIAK ULTRA-LITE 332BHSL

# DECOR

GRAPHITE



BROWNSTONE



COBALT



KODIAK ULTIMATE 291RESL

FREE  
STANDING  
DINETTE  
OPTIONALS



KODIAK ULTIMATE 330BHSL



KODIAK ULTIMATE 3211RLSL

FREE  
STANDING  
DINETTE  
OPTIONALS

SPECIFICATIONS, FEATURES, AND OPTIONS ON NEXT PAGE

## ULTRA-LITE STANDARDS AND OPTIONS

### MANDATORY OPTIONS

60x80 Queen Bed
Express Package
Radial Tires
Stainless Steel Appliances
Enclosed Underbelly
Black Tank Flush
Adjustable Power Awning with LED lighting

### EXTERIOR OPTION

Aluminum Rims
Power Tongue Jack
15k BTU A/C IPO 13.5k BTU
50 AMP Service with 2nd A/C Prep (Select Models)

### INTERIOR OPTIONS

32" LED TV (Select Models)
Tri-Fold Sleeper Sofa

### ULTRA-LITE AND VALUE PACKAGE

Bear Cage Construction
------------------------

Fully Laminated Exterior
Winterization
Exterior TV Mount
Pocket Doors in Bedroom (Select Models)
Oversized Dinette Windows
Gloss White Exterior
Diamond Plate Front Rock Guard
Dark Tinted Safety Glass Windows
Easy Lube Axles
Large Folding Grab Handle
Spare Tire & Carrier
Front & Rear Stab Jacks
Outside Speakers
13,500 BTU Ducted A/C
2 - 20 lb LP Bottles w/Cover
Digital TV Antenna
Oversized Baggage Doors
Bear Cave Storage
Foot Flush Toilet

Night Shades Throughout
Medicine Cabinet w/Mirror
6 Gallon Gas/Electric DSI Water Heater
ABS Tub Surround
Seamless Countertops
12V Bath Exhaust Fan
High Spout Faucet
6 Cubic Foot Double Door Refer
Three Burner Range Top w/ Oven and Glass Cover
Range Hood with 12V Fan/Light
Microwave
AM/FM/CD/DVD Stereo
Cable TV Hookup w/Booster
Bedroom TV Hookup w/Backer
High Output Furnace
Central Control Station
Smoke, LP Leak, & Carbon Monoxide Detectors
Fire Extinguisher

## ULTIMATE STANDARDS AND OPTIONS

### MANDATORY OPTIONS

Ultimate Package
Solid Surface Counter Tops with LED backlighting
Radial Tires
15" Aluminum Rims
Stainless Steel Appliances
Heated and Enclosed Underbelly
Power Tongue Jack with Docking Light
32" LED Flat Screen TV
39" LED Flat Screen TV (291 and 3211 Only)
Interior LED Lights
Tri Fold Sleeper Sofa (Select Models Only)
60x80 Queen Bed
Winterization

### EXTERIOR OPTIONS

Power Stabilizer Jacks
15k BTU A/C IPO 13.5k BTU

State Seal
CSA Construction & Seal
50 AMP Service with 2nd A/C Prep
2nd A/C Non Ducted in Bedroom

### INTERIOR OPTIONS

Freestanding Dinette IPO Booth (291 and 3211)
Theater Seats IPO Chairs (291)

### ULTIMATE PACKAGE

Bear Cage Construction
Fully Laminated Exterior
Diamond Plate Front Rock Guard
Easy Lube Axles
Large Folding Grab Handle
Spare Tire, Carrier & Cover
Front & Rear Stab Jacks
Adjustable Power Awning w/LED Lights

Outside Speakers
Exterior Spray Port
13,500 BTU Ducted A/C
20 lb LP Bottles w/Cover
Digital TV Antenna
Bear Cave Storage with Oversized Baggage Doors
Porcelain Toilet
Night Shades Throughout
Medicine Cabinet w/Mirror
6 Gallon Gas/Electric DSI Water Heater
ABS Tub Surround
Kitchen & Bath Skylight
12V Bath Exhaust Fan
High Rise Faucet
Oversized Farm-style Single Bowl Sink
6 Cubic Foot Double Door Refer
Three Burner Range Top w/ Oven and Glass Cover
Range Hood with 12V Fan/Light

Microwave
Sink Cover
AM/FM/CD/DVD Stereo w/Bluetooth
Cable TV Hookup w/Booster
Bedroom TV Hookup w/Backer
High Output Furnace
Exterior TV Mount
Central Control Station
Oversized Dinette Windows
Smoke, LP Leak, & Carbon Monoxide Detectors
Bear Cage Construction
Fire Extinguisher

### MODERN LUXURY PACKAGE

Gel Coat High Gloss Fiberglass
Painted Front Fiberglass Cap
Hybrid Aluminum Entry Steps
iN-Command 1.05 with Touch Screen

## KODIAK SPECIFICATIONS

MODEL		DIMENSIONS			WEIGHT (LBS.)			TANKS (GALS.)		
MODEL	FLOORPLAN	*EXTERIOR TRAVEL LENGTH	EXTERIOR WIDTH	EXTERIOR HEIGHT (WITH A/C)	**AVERAGE SHIPPING WEIGHT	DRY HITCH WEIGHT	CARGO CARRYING CAPACITY	***FRESH WATER CAPACITY	GREY WATER CAPACITY	BLACK WATER CAPACITY
Ultra-Lite	201QB	24' 1"	8'	10' 3"	3,980	452	1,520	52	39	28
Ultra-Lite	227BH	26' 11"	8'	10' 3"	4,146	419	3,454	52	39	28
Ultra-Lite	248BHSL	28' 11"	8'	10' 7"	TBD	TBD	TBD	52	56	28
Ultra-Lite	255BHSL	29' 2"	8'	10' 7"	5,139	565	1,861	52	39	28
Ultra-Lite	261RBSL	31' 0"	8'	10' 7"	5,786	646	1,814	52	78	28
Ultra-Lite	283BHSL	32' 10"	8'	10' 7"	5,704	770	1,896	52	39	28
Ultra-Lite	285BHSL	33' 0"	8'	10' 10"	5,913	622	1,687	52	39	28
Ultra-Lite	287RKSL	32' 2"	8'	10' 9"	5,781	713	1,819	52	56	28
Ultra-Lite	293RLSL	33' 7"	8'	11' 2"	6,000	863	1,600	52	39	28
Ultra-Lite	299BHSL	35' 7"	8'	10' 9"	6,582	791	1,018	52	39	28
Ultra-Lite	331BHSL	37' 3"	8'	11' 2"	7,256	880	2,424	52	78	28
Ultra-Lite	332BHSL	37' 3"	8'	11' 2"	6,940	908	2,740	52	78	28
Ultimate	291RESL	32' 10"	8'	11' 1"	6,807	874	2,093	52	56	28
Ultimate	3211RLSL	36' 3"	8'	11' 2"	7,304	1,012	2,376	52	78	28
Ultimate	330BHSL	37' 3"	8'	11' 2"	7,725	991	1,955	52	78	28

\*Length is defined as the distance from the centerline of hitch pin/coupler to rear bumper of trailer. \*\*Our weights represent how most units are built, inclusive of many commonly-ordered options.

\*\*\*Fresh water capacity includes water heater capacity.

**DISCLAIMER:** Product information is as accurate as possible as of the brochure publication date. All features, floorplans and specifications in this brochure are subject to change without notice. Please consult Dutchmen's website at [www.Dutchmen.com](http://www.Dutchmen.com) for current product information and specifications. Tow Vehicle Disclaimer. **CAUTION:** Owners of Dutchmen recreational vehicles are solely responsible for the selection and proper use of tow vehicles. All customers should consult with a motor vehicle manufacturer or their dealer concerning the purchase and use of suitable tow vehicles for Dutchmen products. Dutchmen disclaims any liability or damages suffered as a result of the selection, operation, use or misuse of a tow vehicle. DUTCHMEN'S LIMITED WARRANTY DOES NOT COVER DAMAGE TO THE RECREATIONAL VEHICLE OR THE TOW VEHICLE AS A RESULT OF THE SELECTION, OPERATION, USE OR MISUSE OF THE TOW VEHICLE. REFERENCE DUTCHMEN MANUFACTURING OWNERS MANUAL FOR LIMITED WARRANTY DETAILS.

# SOLID FOUNDATION

## ROOF

### 5" Thick Truss Style Aluminum Frame Construction

- 1 TPO Roof with 12 Year Manufacturer's Warranty
- 2 Luan Wood Backer
- 3 Tubular Aluminum Welded Framed Roof
- 4 High Density Structural Foam Insulation
- 5 Decorative Ceiling Finish
- 6 13,500 BTU Roof Ducted A/C
- 7 A/C Ducting System with Taped Seams

## FLOOR

### Fully Laminated Welded Aluminum Frame Construction

- 1 Residential Carpeting in Slide Room
- 2 Beauflor Flooring - 5 Year Warranty
- 3 Dual Layers of Floor Decking
- 4 Tubular Welded Aluminum Framed Floor
- 5 High Density Structural Foam Insulation
- 6 Polypropylene Waterproof Vapor Barrier

## CHASSIS

### Steel I-Beam Powder Coated Chassis

- 1 Folding Entry Steps
- 2 Four Corner Stabilizer Jacks
- 3 Large Heated Tanks Mounted Below Floor
- 4 "Polar Package" Enclosed and Heated Underbelly
- 5 Radial Tires
- 6 Easy-Lube Hubs
- 7 LP Tanks with ABS Cover

## WALLS

### Fully Laminated, Welded Aluminum Frame Construction

- 1 High Gloss Fiberglass Exterior
- 2 Luan Wood Backer
- 3 Tubular Aluminum Welded Frame Walls
- 4 High Density Structural Foam Insulation
- 5 Decorative Wall Finish
- 6 Tinted Safety Glass Windows
- 7 Insulated Baggage Doors
- 8 TPO Fender Skirts
- 9 XL-Folding Entry Assist Handle
- 10 Aerodynamic Front Profile for Better Fuel Economy
- 11 Diamond Plate Rock Guard
- 12 Adjustable Power Awning with LED Lights



**BACKED BY  
OUR 100% PDI  
INSPECTION  
AND 3-YEAR  
LIMITED  
STRUCTURAL  
WARRANTY**



> **6-WAY WELDED ALUMINUM SUPER STRUCTURE**

> **5-WAY LAMINATION**

• **253-POINT INSPECTION**

• **RAIN BAY WATER TEST**

• **INDUSTRY'S BEST WARRANTY**



## THE INDUSTRY'S BEST WARRANTY

Every Dutchmen RV comes with our all-new 3-year limited structural warranty. Dutchmen owners can expect an extra two years of protection and peace of mind.

# 100% PRE-DELIVERY INSPECTION

At Dutchmen, quality is our standard. **Every single Dutchmen RV that comes off the line receives its own pre-delivery inspection.** Typically, a competitor performs random inspections, meaning you won't find this commitment to quality anywhere else.



## 253 POINT INSPECTION



## RAIN BAY

# MORE STANDARD FEATURES MORE VALUE

Dutchmen RVs turn more heads on the lot and in the campground than any other. Why? While other manufacturers offer features as options, Dutchmen tends to make those same features standard. Call it “bang for the buck,” “more for your money,” or simply “more value.” **We've built a reputation for bringing RV owners more standard features for less money** for more than 25 years . . . and it's a reputation we plan to keep.



More than 300 Dutchmen dealers across North America and our industry-leading service center in Goshen, Indiana, combine for your peace of mind before, during and after the sale. Rest assured no matter where your travels take you, **the best-resourced RV manufacturing company in the world is behind you all the way.**

To check for recent updates to floorplans and specifications, **Scan this QR CODE** with your favorite QR Reader application.



**www.dutchmen.com**  
Visit us online to see all of the Dutchmen brands, innovative models and spacious floorplans.



From giving advice to servicing products, we consider our loyal dealers the best resource for learning about Dutchmen products.

PO BOX 2000 • 2164 Caragana Court  
Goshen, Indiana 46527 Sales: 574.537.0600  
www.dutchmen.com